

A large, light green abstract graphic consisting of several curved, overlapping shapes that resemble a stylized leaf or a swoosh. A pink oval is positioned at the top left of this graphic.

**BSP DEVELOPMENT**

**SIMPLIFIED**

**&**

**ACCELERATED**

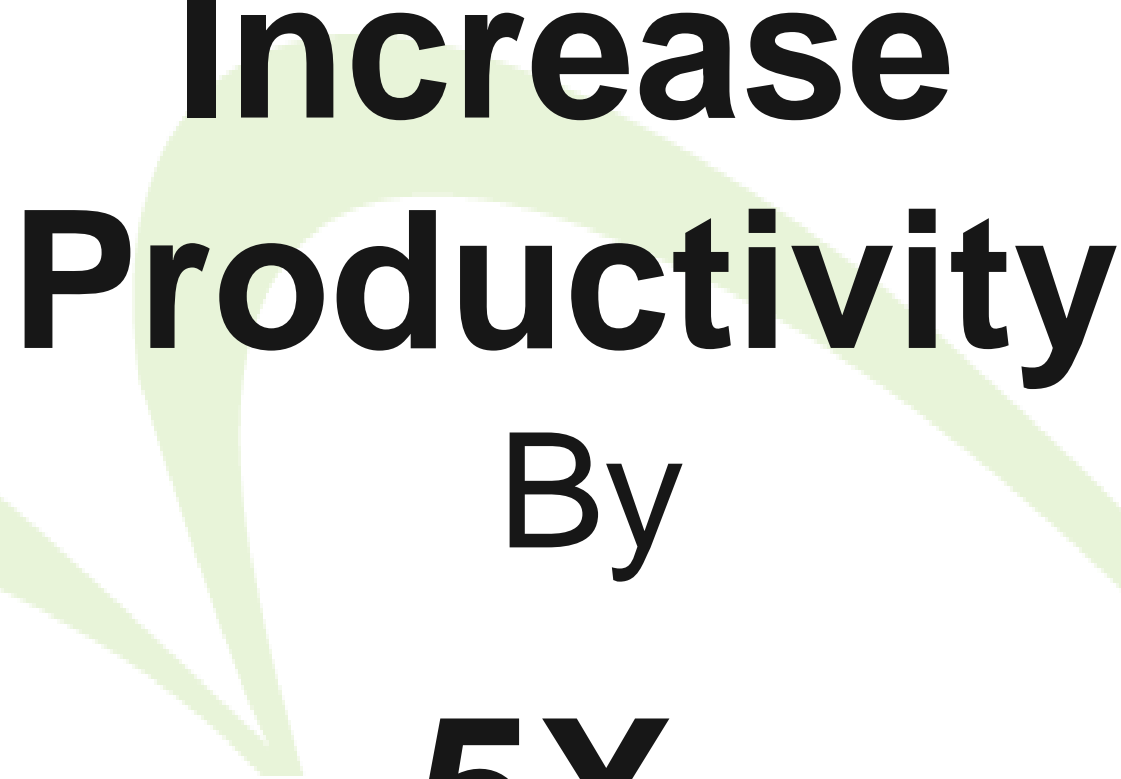


# Automated Device Driver Generation

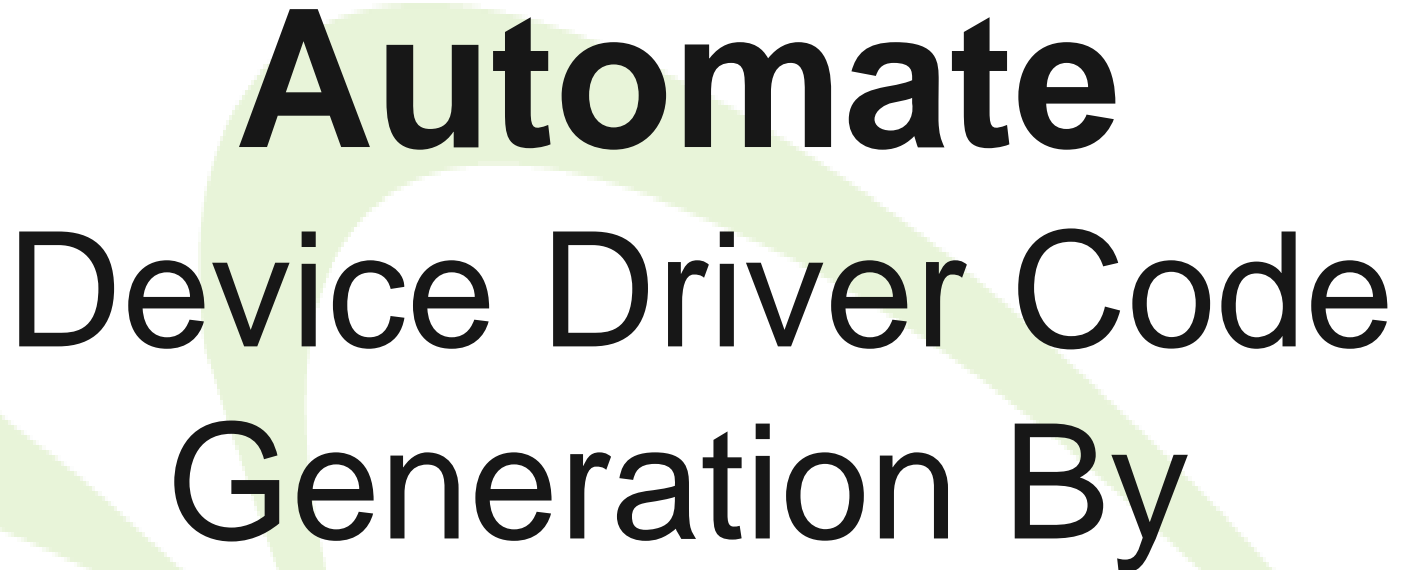
---



**Slash**  
**Time To Market By**  
**3X**



**Increase  
Productivity  
By  
5X**



**Automate  
Device Driver Code  
Generation By**

**95%**

# Trends In System Design Requires Rapid BSP Development

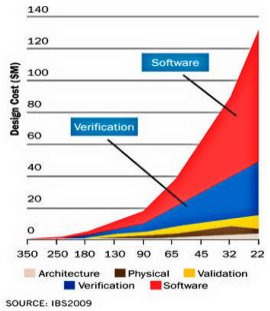
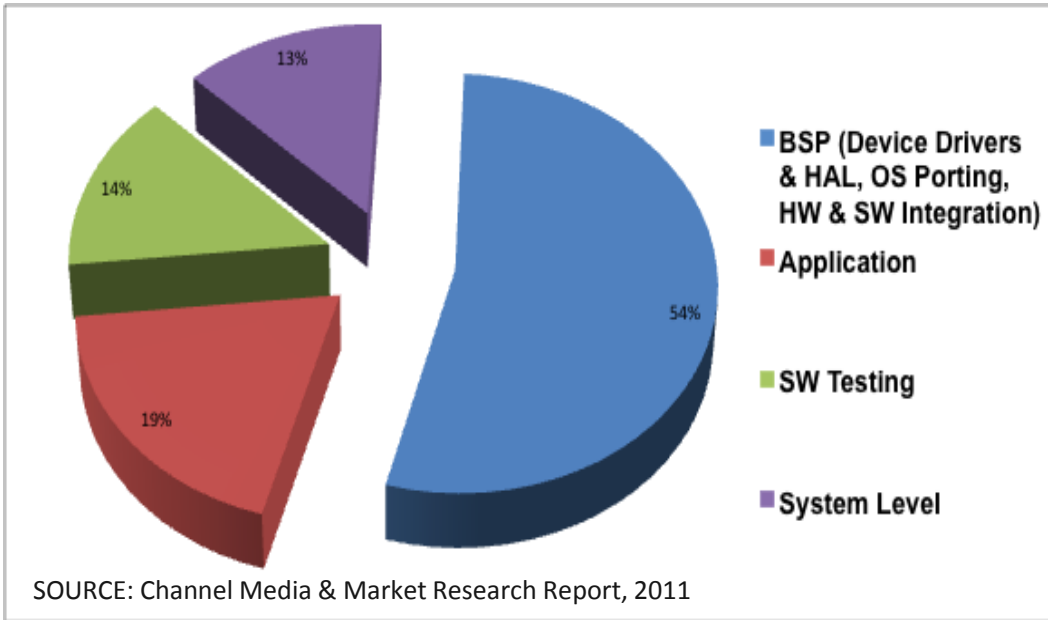


Shorter Product Lifecycles

Rapid BSP Development Is The Challenge



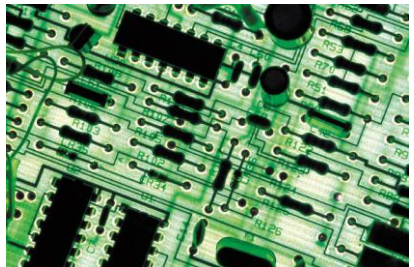
Applications are the Key Differentiators



Rising Share of Software Costs

# Challenges In BSP Development

- Integration Challenges

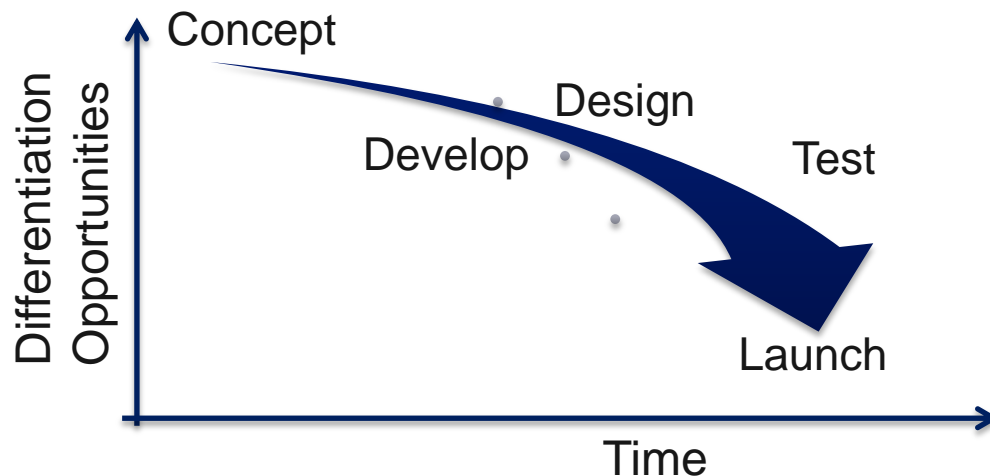


```
#include<ch9.h>
static int xxx_probe()
{
    base_addr = ioremap;
}
```

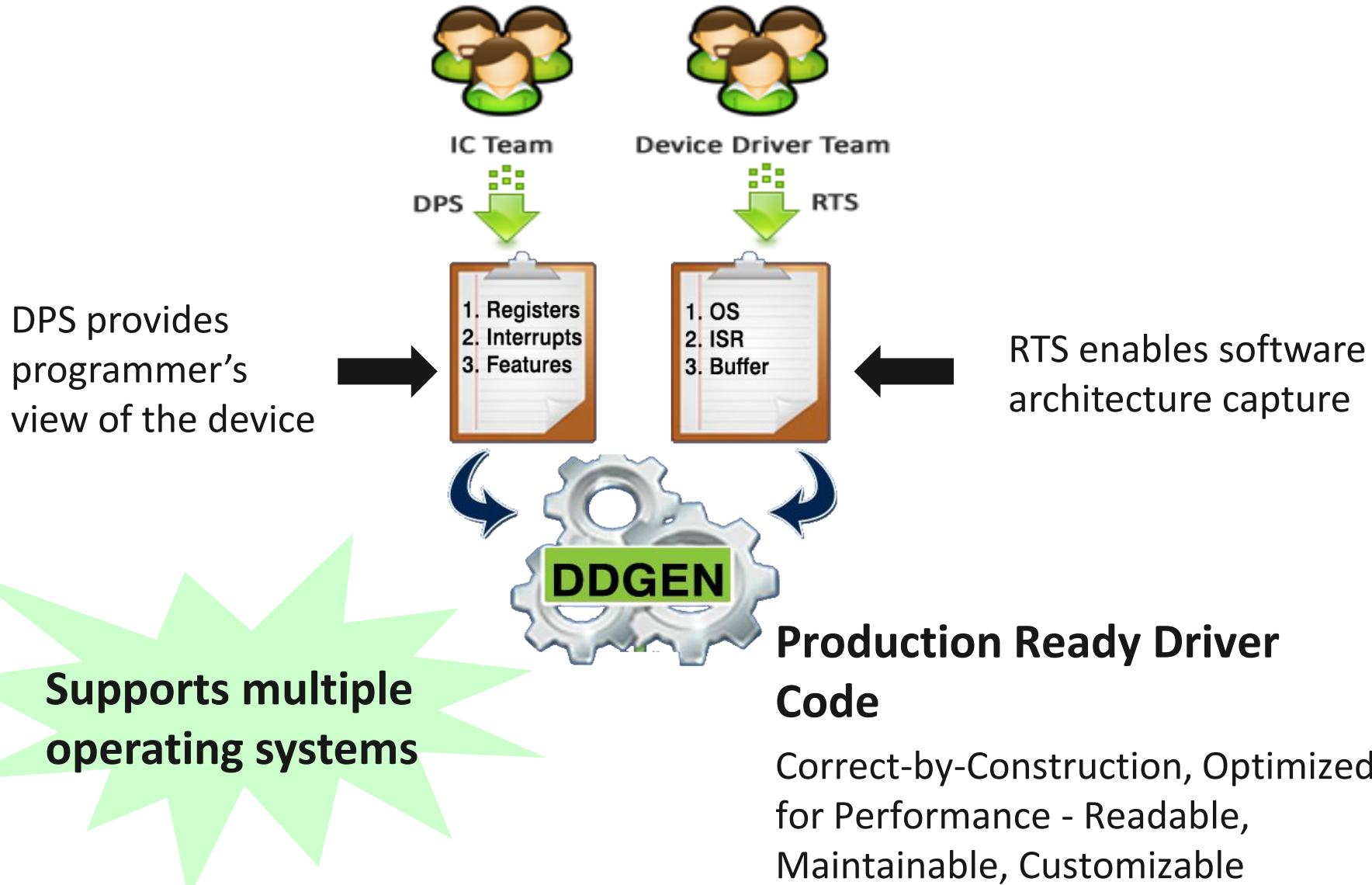
- Significant Investment



- Delayed Product Rollout



# Vayavya's Solution – Automating Device Driver Generation



# Vayavya BSP Development Advantage



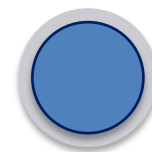
30%

REDUCTION  
IN COSTS



40%

REDUCTION  
IN TIME TO  
MARKET



95%

AUTOMATED  
DRIVER  
CODE



4X-5X

**LESSER  
EFFORT  
FOR NEW  
BOARD O/S**



10X

**FASTER  
SUPPORT  
FOR  
DERIVATIVE  
BOARDS  
AND SOC**



# Vavavya DDGEN Delivers

## Readability

- Highly readable code – easy modification
- Doxygen compliant – quick API html

## QOR

- Performance equivalent to hand-written driver code
- Code size comparable as well

## Ease of Use

- DPS, RTS are text files
- Legacy Register spec automatically imported
- Detailed application notes

## Debugability

- Code instrumented with debug statements
- Debug Methodology guide
- Module for register/descriptor probing

# Representative Clients

---

The Fujitsu logo consists of a red infinity symbol above the word "FUJITSU" in a bold, red, sans-serif font.



The NEC logo is the word "NEC" in a bold, blue, sans-serif font.



The Synopsys logo is the word "SYNOPSYS" in a bold, blue, sans-serif font, with a registered trademark symbol (®) to the right.

The Wind River logo is the words "WIND RIVER" in a bold, red, sans-serif font.

# Device Classes Supported

Device Class	Devices
Core devices	UART, Timers, Clocks, DMA, etc.
Bus	I2C, SPI, USB2.0, USB 3.0
Interfaces	Ethernet, SDIO, SD, MMC
Peripherals	Video, Audio

- For unsupported device classes, **DDGEN can still generate**
  - Register access code, basic ISR and driver registration code
- Flexible architecture enables **new device class/OS support in a matter of weeks**

# About Vayavya Labs

**Deloitte.**

Technology Fast50

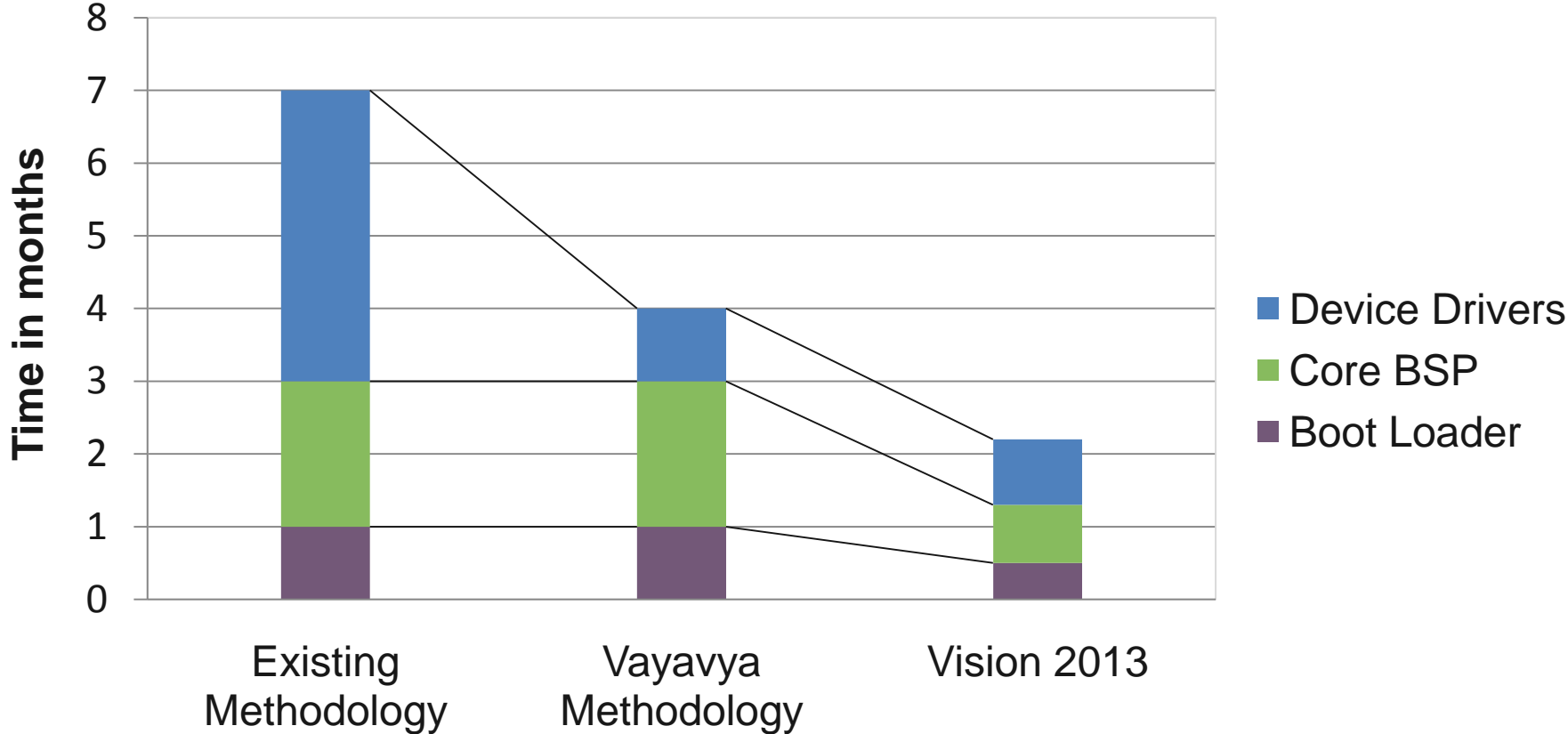
India 2011



- Founded in July 2006, privately held, profitable
- Management team with strong background in DTV and STB solutions
- Patented device driver synthesis technology
- Presence in USA, India & Japan

# Our Quest To Reduce Design Bottlenecks Continues...

## Time to Market Gains



To help you optimize your system design investments

[WWW.VAYAVYALABS.COM](http://WWW.VAYAVYALABS.COM)

